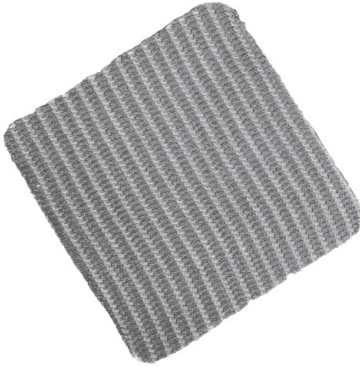




GELLABLE FIBER DRESSINGS Instructions For Use



Description

AGILE gellable fiber dressings utilize Active Fluid Management® (AFM®) technology with the incorporation of highly absorbent gellable fibers. This patented design keeps the wound bed moist, the periwound skin healthy, and harmful exudate away from healing wounds facilitating healing in hard to heal, highly draining chronic wounds.

Indications for Use

AGILE gellable fiber dressings are indicated for the management of acute and chronic wounds: leg ulcers, pressure ulcers, diabetic foot ulcers, partial thickness burns, skin grafts, incisions, donor sites, lacerations, and abrasions.

Contraindications

None known

Precautions & Warnings

- AGILE dressings are not approved for use directly on full thickness burns.
- The Active Fluid Management performance of AGILE dressings may be impaired by use with petrolatum-based ointments.
- AGILE dressings are sterile as provided. Do Not use if the primary package is visually damaged or broken.
- Do Not resterilize.
- Do Not Reuse. AGILE dressings are single use products.
- If redness or irritation occurs, discontinue use.
- Federal law restricts this device to sale by or on the order of a licensed healthcare practitioner (U.S.A. only).

Directions for Use

General Instructions:

AGILE dressings can be used throughout the healing process.

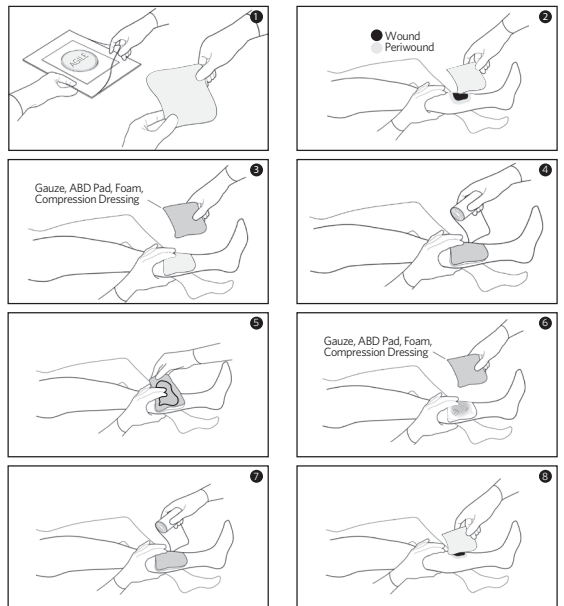
- (1) Prepare the wound bed according to clinical protocol such as debridement and/or cleaning and rinsing with sterile saline or water.
- (2) Remove the dressing from the package and apply to wound with the blue side of the dressing facing away from the wound.
- (2) Secure with an appropriate secondary dressing such as roll gauze, adhesive border gauze, composite island dressing, transparent film, or tape if needed.

NOTES

- Optimal performance requires direct contact with the wound.
- Can be used under compression.
- If required, AGILE dressings can be cut to different shapes and sizes.

Applying AGILE Dressings

- (1) Remove AGILE dressing from package. If required, dressing can be cut to size.
- (2) Apply AGILE with blue side of dressing away from the wound.
- (3) Add absorbent secondary dressing on top of the AGILE dressing (e.g. gauze, ABD pad, foam, compression dressing).
- (4) Secure both dressings using standard methods.
- (5) If secondary dressing becomes saturated, discard saturated secondary dressing without disturbing AGILE dressing.
- (6) Add a new absorbent secondary dressing on top of the AGILE dressing (e.g. gauze, ABD pad, foam, compression dressing).
- (7) Re-Secure both dressings using standard methods.
- (8) Replace AGILE dressing per doctor's orders. Gently lift dressings from the wound. If needed, moisten with sterile saline or water to ease removal.



Removal/Disposal

- AGILE dressings should be changed when clinically indicated or as prescribed by a healthcare professional. Carefully remove the dressing from the wound. Normally the dressing does not adhere to the wound. If adherence is observed, the dressing can be moistened with sterile saline or water to ease removal.
- Dispose of product per your facilities protocol.

Storage

For best results, store in original packaging at room temperature less than 131°F until use. Avoid excessive heat and humidity. Refer to the label on each box for expiration date.



Made in U.S. by
OVIK Health, LLC
Spartanburg, South Carolina
www.ovikhealth.com · 800.432.6686

© 2025 OVIK Health, LLC All rights reserved.

Document # OVIKAGILEPPrO 2025-02